

श्री Aarnã

BUNGALOWS

4 BHK LUXURIOUS BUNGALOWS





Step into a world of Luxury

A beautiful home is the gateway to a beautiful life.

Welcome to Shree Aarna, a new and extraordinary living experience, designed to wrap you in luxury. An elegant residential community of charming 4 BHK Bungalows that brings together every element required for a life of your dreams.

Located in the emerging neighbourhood of Novino-Tarsali Road, your homes will offer much more than a just roof above your head. The gated campus is a serene world which holds the best of urban lifestyle within its walls. From premium abodes to assured safety to modern amenities to great connectivity, Shree Aarna offers it all.

The contemporary architecture and a spectacular campus ensure that your homes always look stylish and feel welcoming. A world of luxury does not get better than this.














Step into a place of Fun

Joy-filled evenings and starlit nights are always right outside your home at Shree Aarna. Experience limitless fun at your homes built to spread delight with an array of thoughtfully picked leisure amenities. Simply de-stress and relax after a long day and watch your kids play.

LEISURE AMENITIES

-  Children Play Area
-  Landscaped Garden
-  Senior Citizen Sitting Area

VALUE ADDED AMENITIES

-  Number Plate to maintain the uniformity of the project
-  Underground Cabling for electricity
-  Water & Drainage Facility
-  Termite Resistance Treatment
-  Individual 3-Phase Electric Connection
-  Tremix Concrete / Heavy Paver Block internal road with designer street lights

SPECIFICATIONS

-  **Structure:**
All RCC & Brick Masonry work as per structural engineer's design.
-  **Paint & Finish:**
Interiors: Smooth Plaster with Wall Putty 2 cot and primer
Exteriors: Double Coat Plaster with water proof and fungal resistant paint
-  **Flooring:**
32" X 32" high grade Nano finish vitrified tile flooring in living room, kitchen and all bedrooms 24" X 24" Kota Stone Flooring in Parking Area
-  **Doors & Windows:**
Doors: Elegant Wooden Entrance Door, Internal Flush Doors, Stone frames in all doors
Windows: Anodized Coated Aluminium Section Windows with and Safety Grills
-  **Terrace:**
Open terrace finished with chemical water proofing and china mosaic flooring/tiles
-  **Electrification:**
 - Concealed copper wiring of approved quality
 - Branded Premium quality modular switches with sufficient electrical points as per architect's plan
-  **Water Supply:**
24 hours water supply through overhead & underground tank of sufficient size.
-  **Bathrooms & Toilets:**
 - Designer bathrooms with Premium PGVT Tiles upto lintel Level
 - Branded Premium Bath fittings
 - Premium Branded Plumbing Fixtures and Vessels
-  **Kitchen:**
Granite kitchen platform with SS Sink, glazed tiles dado up to lintel level

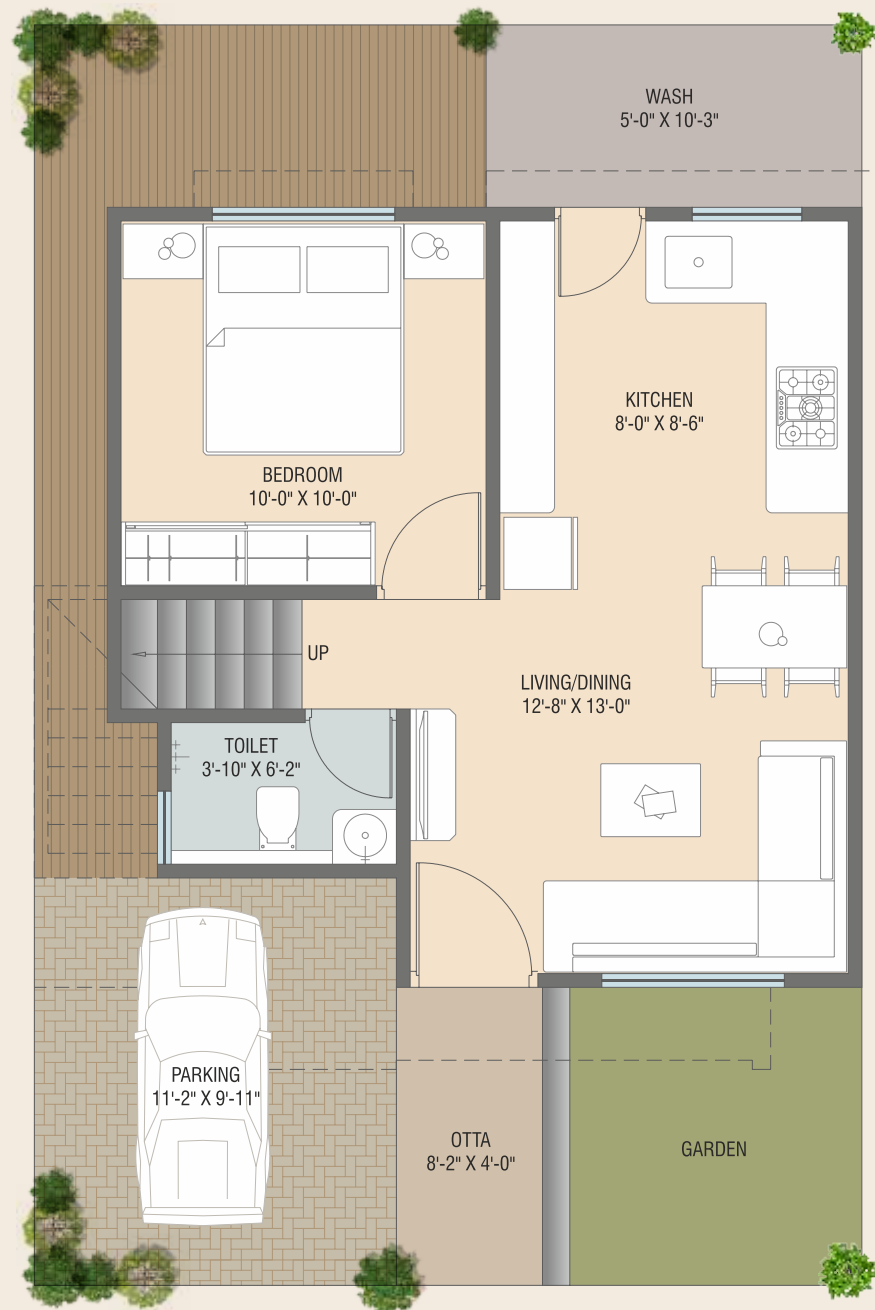
LAYOUT PLAN

PLOT NO.	AREA
A1	933 SQ.FT.
A2	807 SQ.FT.
A3	806 SQ.FT.
A4	805 SQ.FT.
A5	804 SQ.FT.
A6	803 SQ.FT.
A7	802 SQ.FT.
B8	926 SQ.FT.
C9	965 SQ.FT.
A10	783 SQ.FT.
A11	783 SQ.FT.
A12	783 SQ.FT.
A13	783 SQ.FT.
A14	783 SQ.FT.
A15	783 SQ.FT.
A16	1017 SQ.FT.
A17	783 SQ.FT.
A18	783 SQ.FT.
A19	783 SQ.FT.
A20	783 SQ.FT.
A21	783 SQ.FT.
D22	1052 SQ.FT.

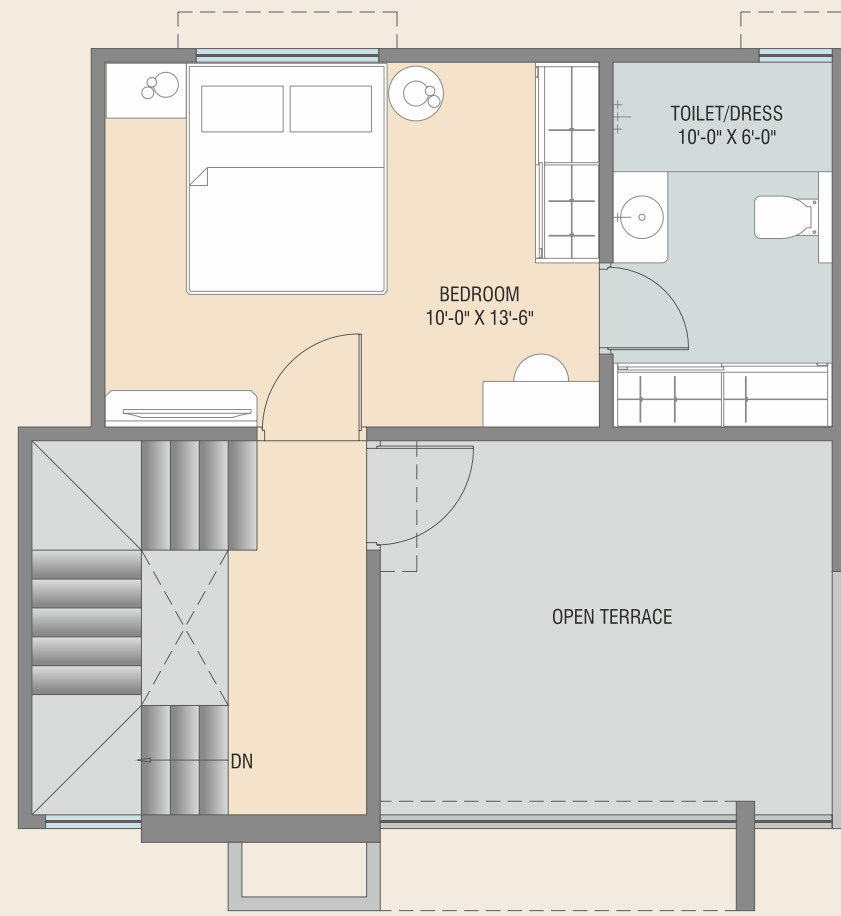


TYPE -A FLOORPLAN

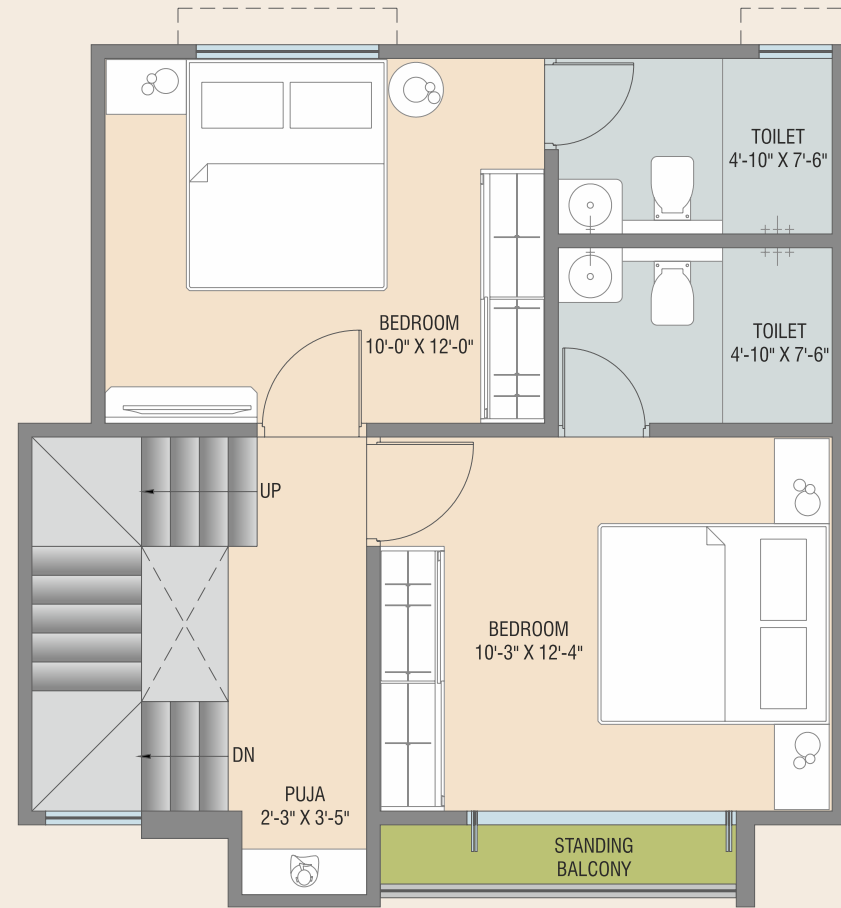
Carpet Area= 1017.00 SQFT
 Builtup AREA = 1287.00 SQ.FT.
 Minimum Plot Area= 783.18 SQ.FT.



Ground Floor Plan



Second Floor Plan



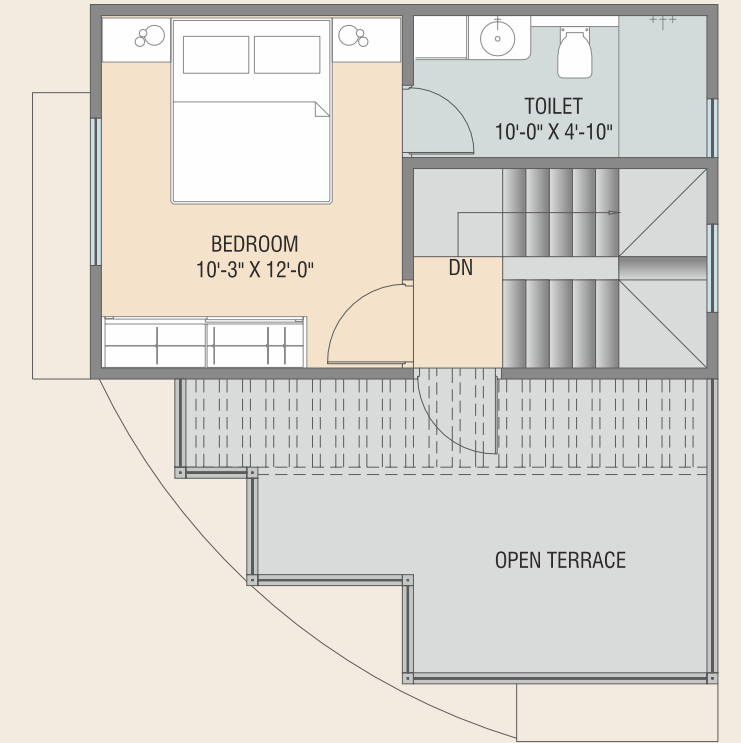
First Floor Plan

TYPE -B FLOORPLAN

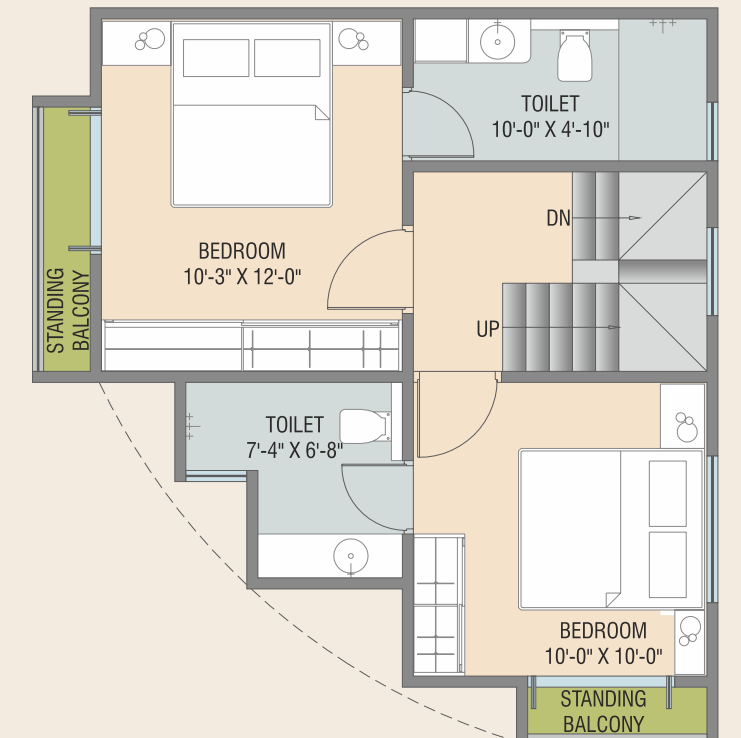
Carpet Area= 881.00 SQFT
 Builtup AREA = 1102.00 SQ.FT.
 Plot No. 8 Area= 926.00 SQ.FT.



Ground Floor Plan



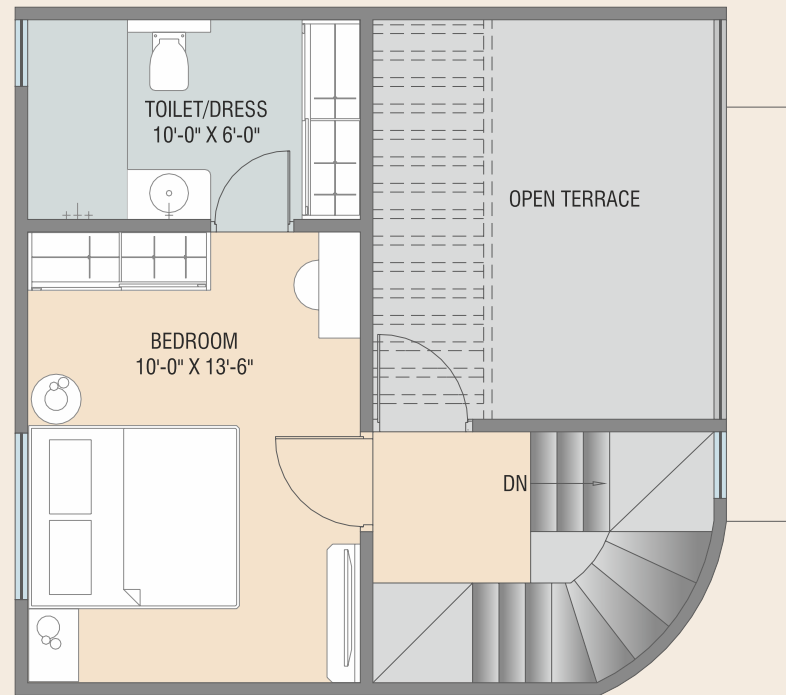
Second Floor Plan



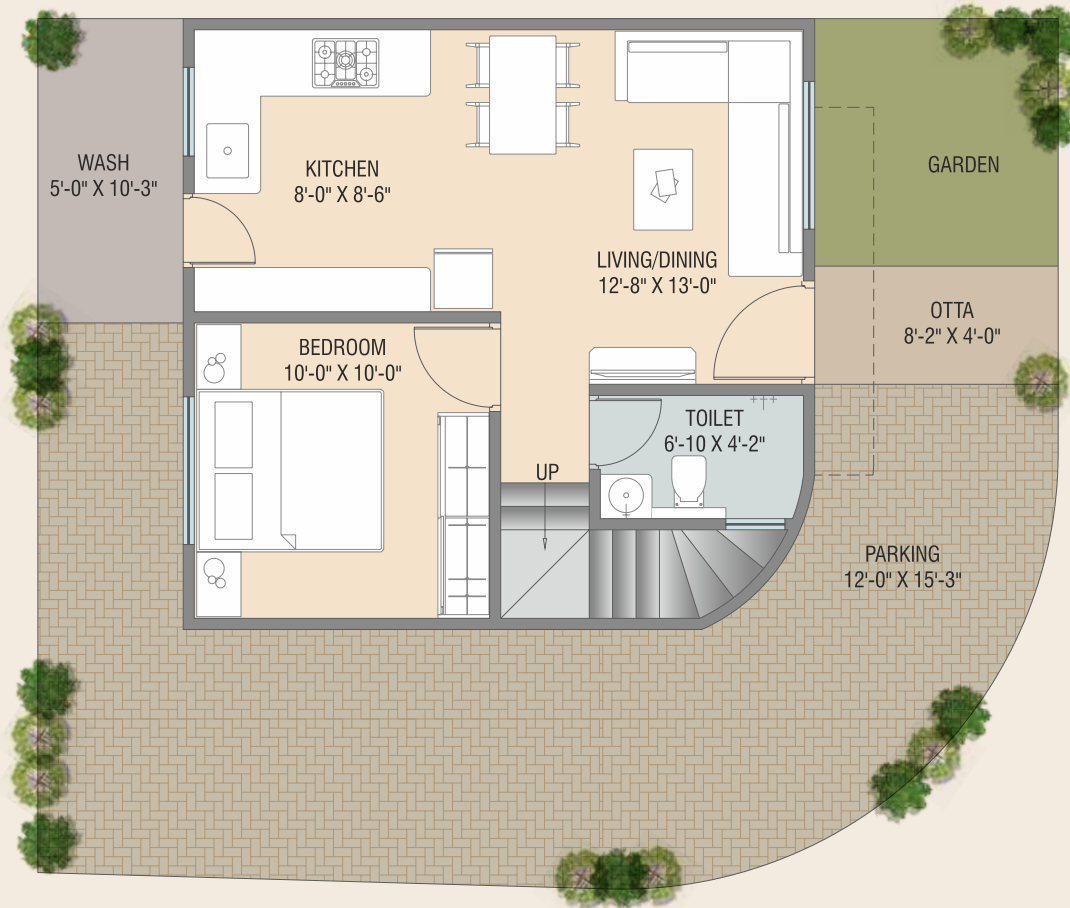
First Floor Plan

TYPE -C FLOOR PLAN

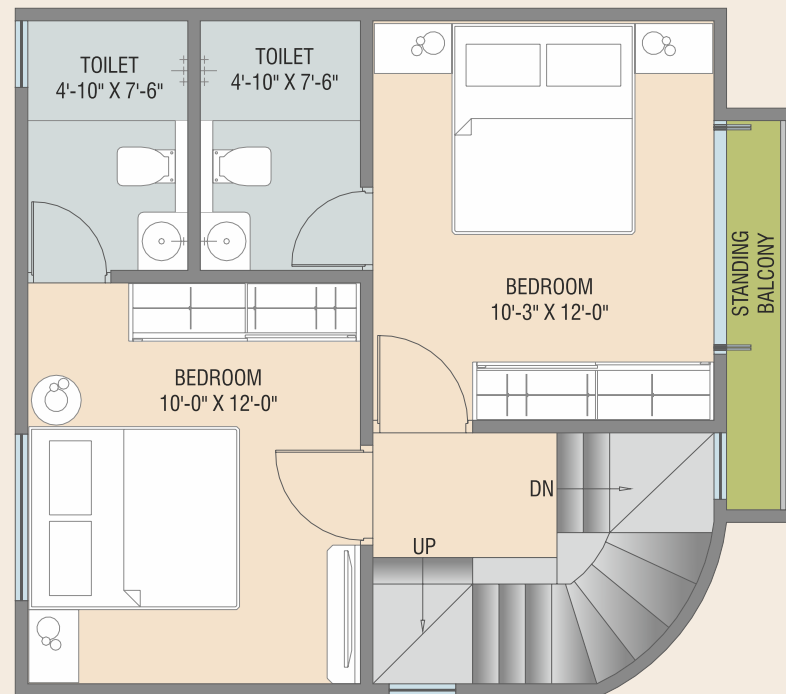
Carpet Area= 968.00 SQFT
 Builtup AREA = 1175.00 SQ.FT.
 Plot No. 09 Area= 965.31 SQ.FT.



Second Floor Plan



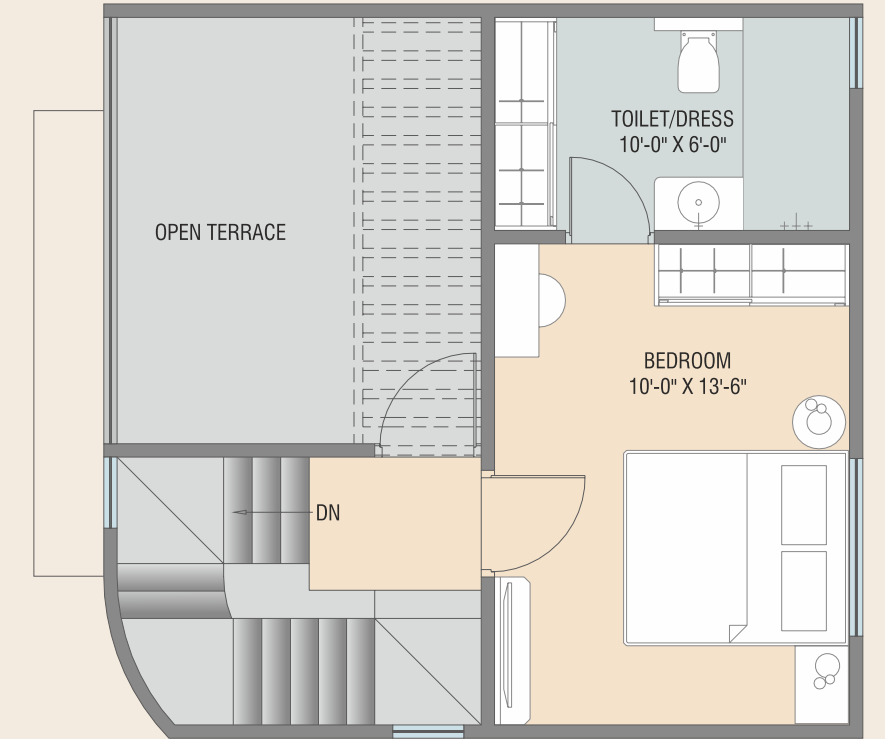
Ground Floor Plan



First Floor Plan

TYPE -D FLOOR PLAN

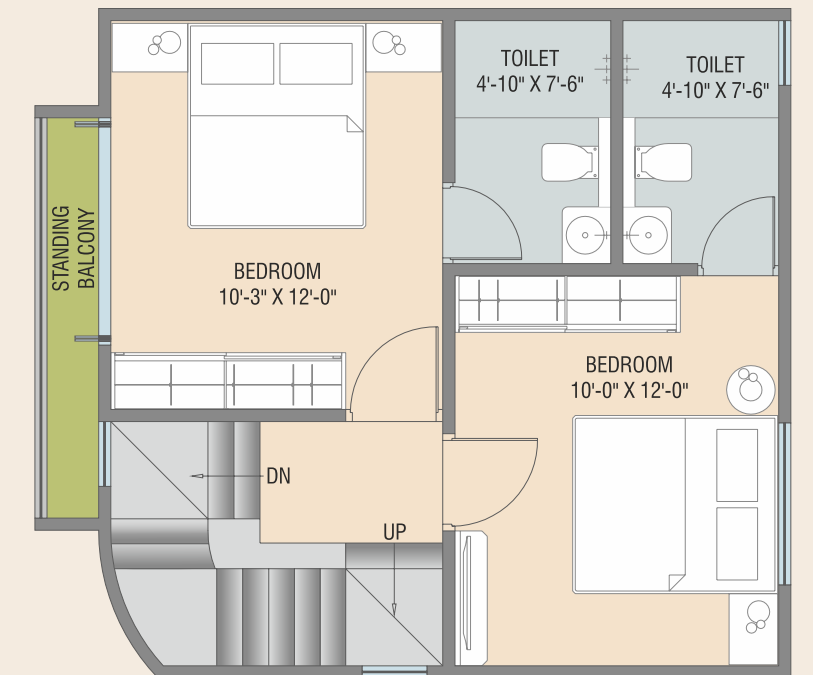
Carpet Area= 942.00 SQFT
 Builtup AREA = 1209.00 SQ.FT.
 Plot No. 22 Area= 1052.28 SQ.FT.



Second Floor Plan



Ground Floor Plan



First Floor Plan

KEYPLAN



Developers: **Rudra Enterprise**

Site: Shree Aarna Bungalows, Opp. Vrajdhara Society,
Nr. Amrapali Bunglow, Novino-Tarsali Road, Tarsali Vadodara

M.: 9173773977

E-Mail: shreearna105.2@gmail.com

Architect:



Architecture • Planning • Interiors

Structure Consultant:
Zarna Associates

Payment Schedule : On Booking 10% | On Completion of Plinth 25% | On Completion of Ground Floor Plan 15% | On Completion of First Floor Slab 15% | On Completion of Plaster Level 15% | On Completion of Flooring Level 15% | Before Possession 05%

Disclaimer: All plans are subject to amendments and approval by the relevant authorities. All photography and computer imagery are artist's impression and are provided for illustrative and indicative purposes only. While every reasonable care has been taken in providing this information, the developers cannot be held responsible for any inaccuracy. Subject to Vadodara Jurisdiction.

RERA No.:

RERA Website: gujrera.gujarat.gov.in